

Portrait Lighting

Lights

- Main light or key light
- Fill light or fill-in light
- Back light
- Catch Light

Types of lightings

- Broad lighting
- Short lighting
- Butterfly lighting
- Rembrandt lighting
- Split lighting
- Rim lighting

Broad lighting

- The main light completely illuminates the side of the face toward the camera



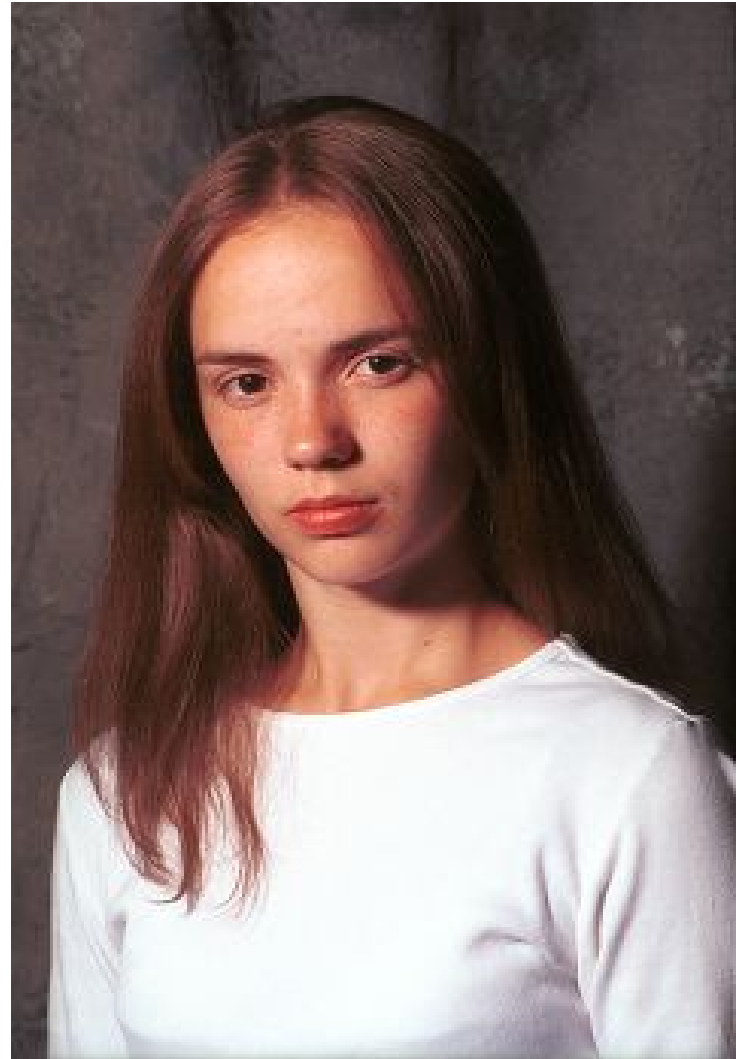
Short lighting

- The main light completely illuminates the side of the face turned away from the camera.



Butterfly lighting

- The main light is placed directly in front of the face and cast a shadow directly under the nose.



Rembrandt lighting

- The main light is placed high and to the side of the face turned away from the camera and produces a triangle of light on the side of the face in shadow.
- This is a combination of short lighting and butterfly lighting.



Split lighting

- The main light is placed to illuminate one side of the face completely while placing the other side in shadow.



Rim lighting

- The main light is placed behind the subject and places the entire face in shadow.

