

Light and Impact in Photography

- * Quality of Light
 - * Directional Light
 - * Impact
-

- Light can have TONE – dark/light
- Light can be SOFT or HARD – blurred/sharp
- Light can have COLOR – muted/saturated
- Light can have CONTRAST – dark tones/very light tones
- Great photographers take these qualities and turn them into a composition and create a photograph

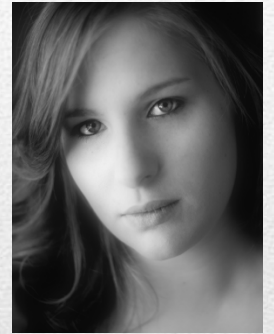
Quality of Light

Quality of Light

1. Tone (light/dark)



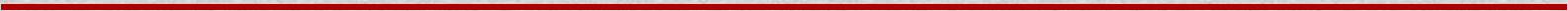
2. Soft/Hard (blur/clear)



3. Color (muted/saturated)



4. Contrast



- Front Light
 - Flat with few shadows
- Back Light
 - Rim light
 - Translucent
 - Silhouettes
- Spot Light
 - Gap that light comes through
- Side Light
 - Generates texture
 - Can be very dramatic
- Reflected Light
 - Lakes and mirrors, etc.

Directional Light

Directional Light

Front



Back



Directional Light

Spot



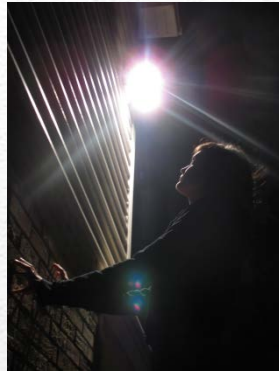
Side



Reflected



- Dark – vs – LIGHT



Black and white – vs – COLOR

- No detail – vs – LOTS OF DETAIL



Blurred – vs – SHARP/CLEAR

Creating Impact

• Still – vs – MOVING



Repeating pattern
– vs –
BREAK IN PATTERN

Seen every day

– vs –
VERY
UNUSUAL



Cool colors
– vs –
WARM COLORS

Creating Impact

- Complimentary Colors



Purple/YELLOW

Green/RED



Blue/ORANGE

Creating Impact
